



# Roxtec CF 16-gennemføring

Tætning designet med metalramme med lav profil.

Roxtec CF 16 er en lav-profil kabelgennemføring til anvendelse i kabinetter. Gennemføringen fås i pulverlakeret blødt stål eller rustfrit stål samt i versioner, der kan åbnes. Den rustfrie stål-version er klassificeret til IP 69K.



- Letvægt
- Pladsbesparende
- Kan bruges til preterminerede kabler

## Produktegenskaber



IP/UL NEMA

## Byggekonstruktion



El-skabe og kabinetter

## Monteringstype



Bolting

## Normeringer og certifikater

### Tæthed

- IP 66/67, IP 69K, UL/NEMA 4,4X,12,13

## Rammedimensioner

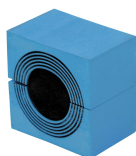
mm/kg

De nedenstående rammevarianter udgør et begrænset udvalg. Du kan se hele udvalget af rammer og konfigurationer på [roxtec.com](https://www.roxtec.com).

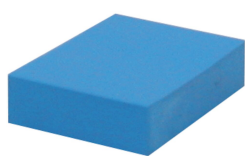
Title	Rammeåbninger	Pakkeareaö	Udvendige mål WxHxD	Åbningsmål w x h	Vægt	Art.-nr.
CF 16	1	40 x 160	93 x 234 x 42	71(+1/-1) x 187(+2/-0.5)	1.4	CSF0000160010
CF 16 AISI304	1	40 x 160	93 x 234 x 42	71(+1/-1) x 187(+2/-0.5)	1.4	ECF0001600021
CF 16 AISI304 OPEN	1	40 x 160	93 x 234 x 42	71(+1/-1) x 187(+2/-0.5)	1.2	5CF0000004946
CF 16 OPEN	1	40 x 160	93 x 234 x 42	71(+1/-1) x 187(+2/-0.5)	1.4	CSF1000160010

## Data om tætningskomponenter

### Tætningskomponenter



CM-modul med Multidiameter™



CM fast kompensationsmodul



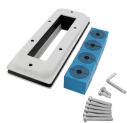
Lubrikant

For mer information, besøg venligst [roxtec.com](https://www.roxtec.com).



## Foreslåede tætningskit

mm/kg



CF 16/4



CF 16/10



CF 16/16



CF 16/19

Title	Konfiguration	Udvendige mål WxHxD	Åbningsmål w x h	Vægt	Art.-nr.
CF 16/4	4x (9.5-32.5)	93 x 234 x 42	71(-2) x 187	1.7	CKT0008020004
CF 16/10	2x (9.5-32.5), 8x (3.5-16.5)	93 x 234 x 42	71(-2) x 187	1.7	CKT0008020010
CF 16/16	16x (3.5-16.5)	93 x 234 x 42	71(-2) x 187	1.7	CKT0008020016
CF 16/19	1x (9.5-32.5), 6x (3.5-16.5), 12x (3.5-10.5)	93 x 234 x 42	71(-2) x 187	1.7	CKT0008020119

The product information provided by Roxtec does not release the purchaser of the Roxtec system, or part thereof, from the obligation to independently determine the suitability of the products for the intended process, installation and/or use.

Roxtec gives no guarantee for the Roxtec system or any part thereof and assumes no liability for any loss or damage whatsoever, whether direct, indirect, consequential, loss of profit or otherwise, occurred or caused by the Roxtec systems or installations containing components not manufactured by an authorized manufacturer and/or occurred or caused by the use of the Roxtec system in a manner or for an application other than for which the Roxtec system was designed or intended.

Roxtec expressly excludes any implied warranties of merchantability and fitness for a particular purpose and all other express or implied representations and warranties provided by statute or common law. User determines suitability of the Roxtec system for intended use and assumes all risk and liability in connection therewith. In no event shall Roxtec be liable for indirect, consequential, punitive, special, exemplary or incidental damages or losses.

The Roxtec products are offered and sold in accordance with the conditions of the Roxtec General Terms of Sales. The latest version of the Roxtec General Terms of Sales can be downloaded from <https://www.roxtec.com/en/about-us/about-roxtec/general-terms-of-sales/>

We reserve the right to make changes to the product and technical information without further notice. Any errors in print or entry are no claims for indemnity. The content of this publication is the property of Roxtec International AB and is protected by copyright.

This document was generated on: 2024-04-17